

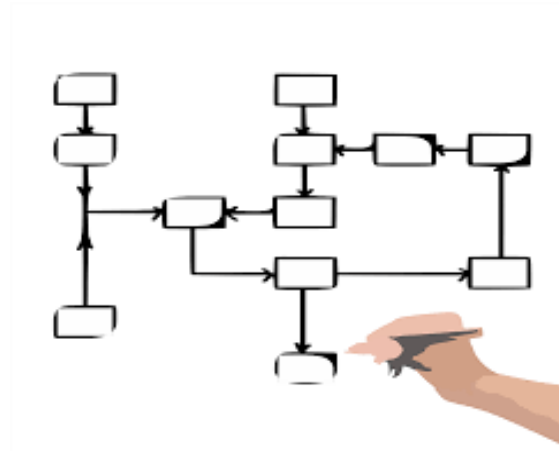


Project Intervention Logic Priority Axis 1:





In this presentation, we are going to give you an example of the project intervention logic applied to the Priority Axis 1 of our Programme.





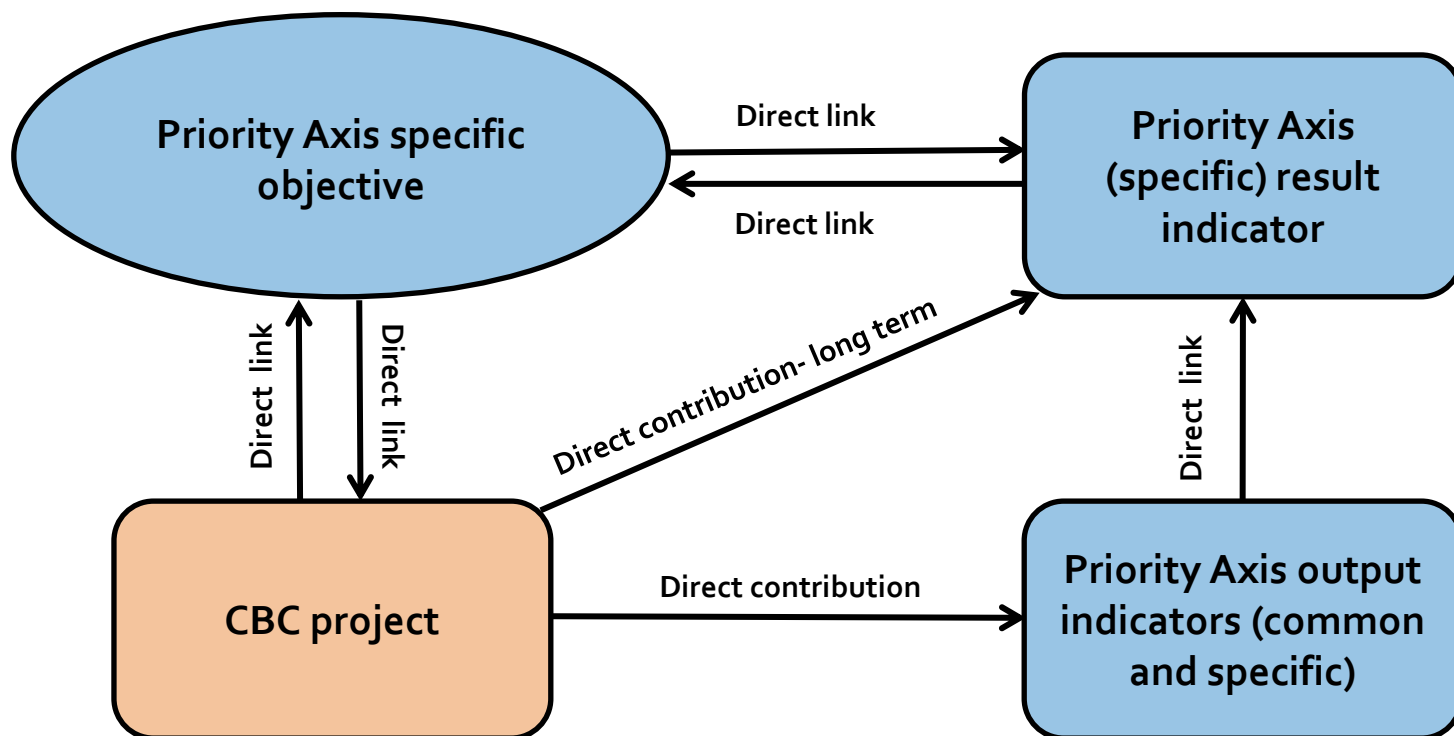
The intervention logic of your project has to be designed in a way that it contributes directly to the achievement of the specific objective of the selected Priority Axis of the Programme.



Project intervention logic

Direct contribution

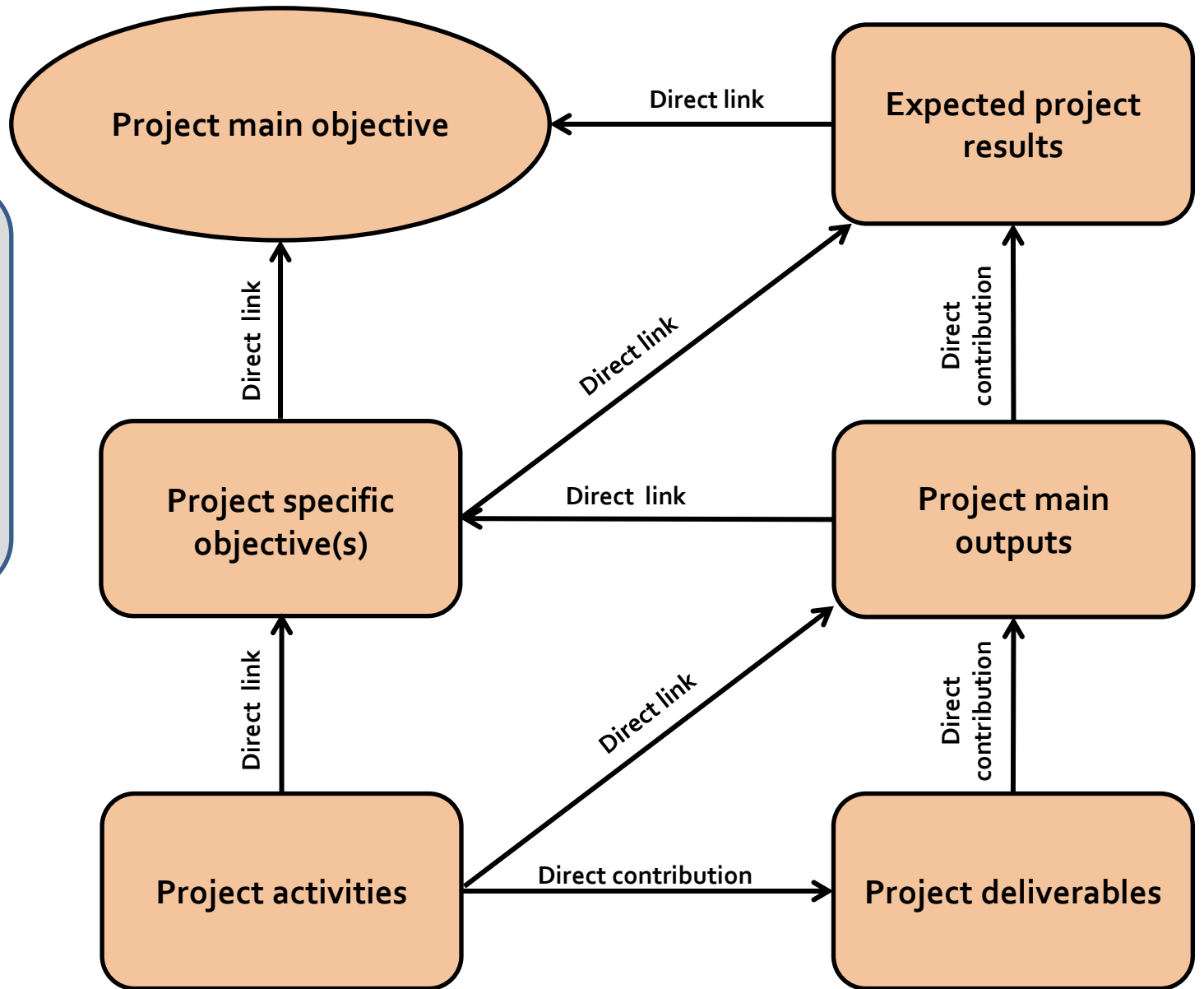
Programme Priority Axis
specific objective



This is schematic presentation of the PROGRAMME intervention logic.



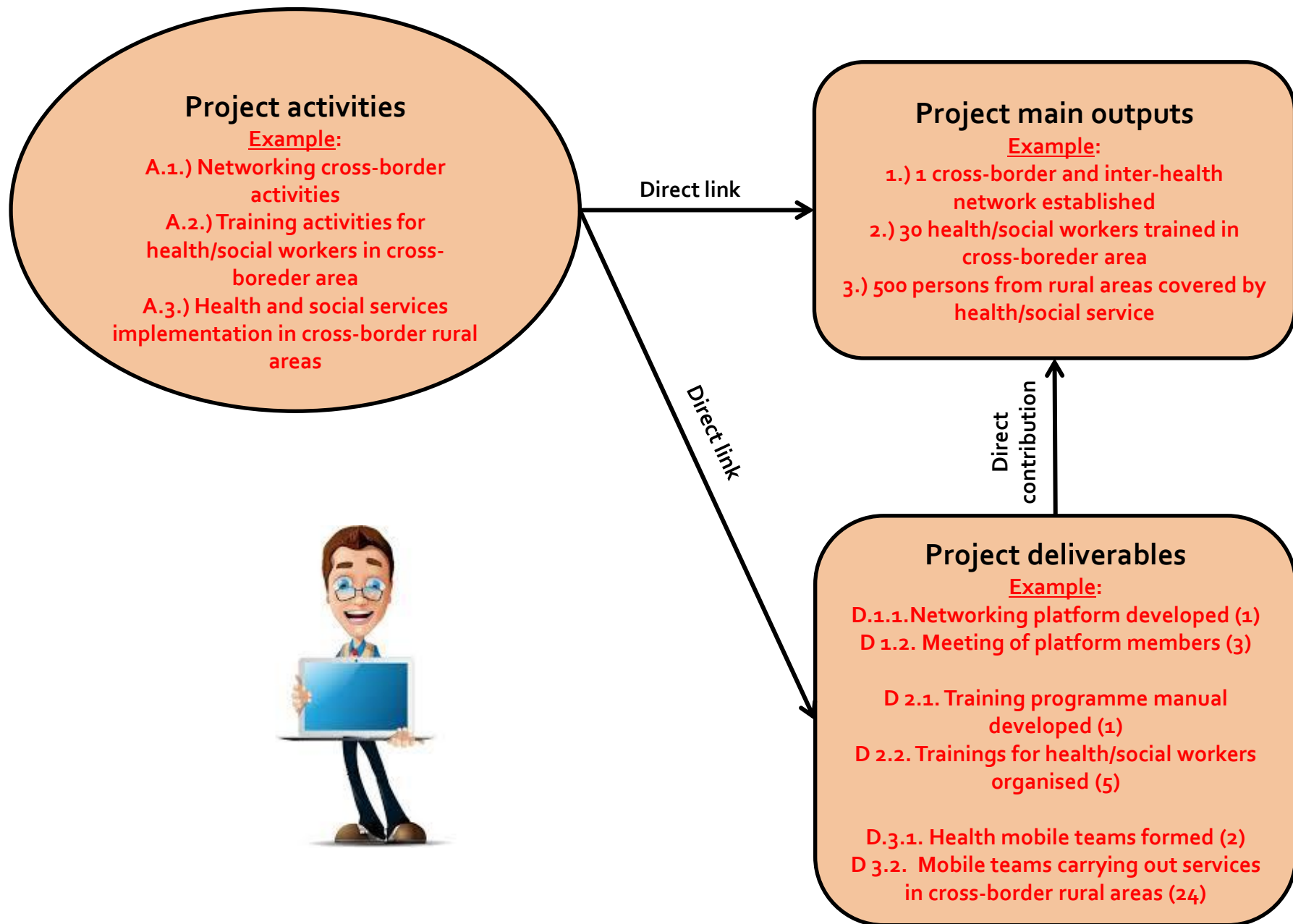
And this is schematic presentation of the PROJECT intervention logic.

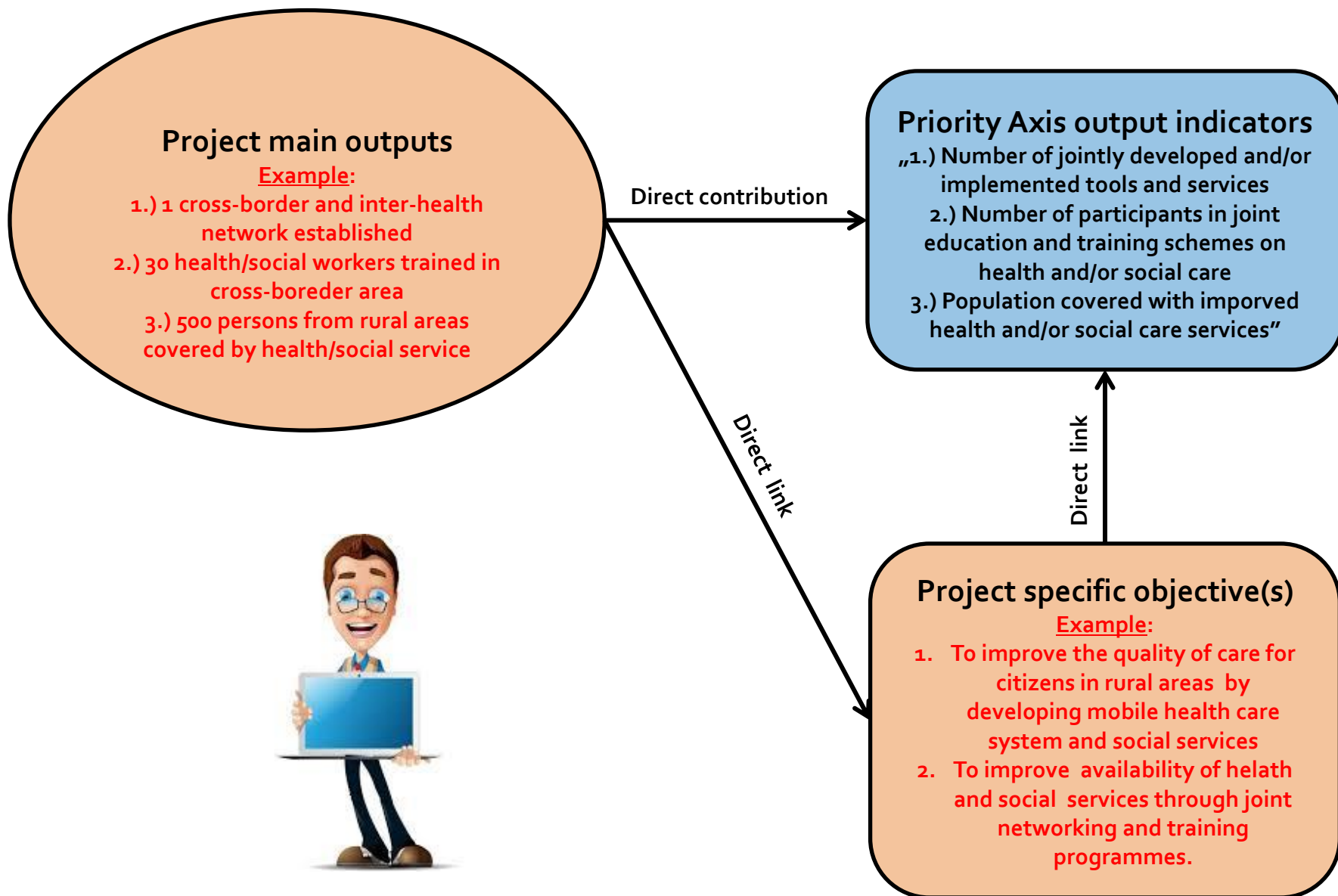


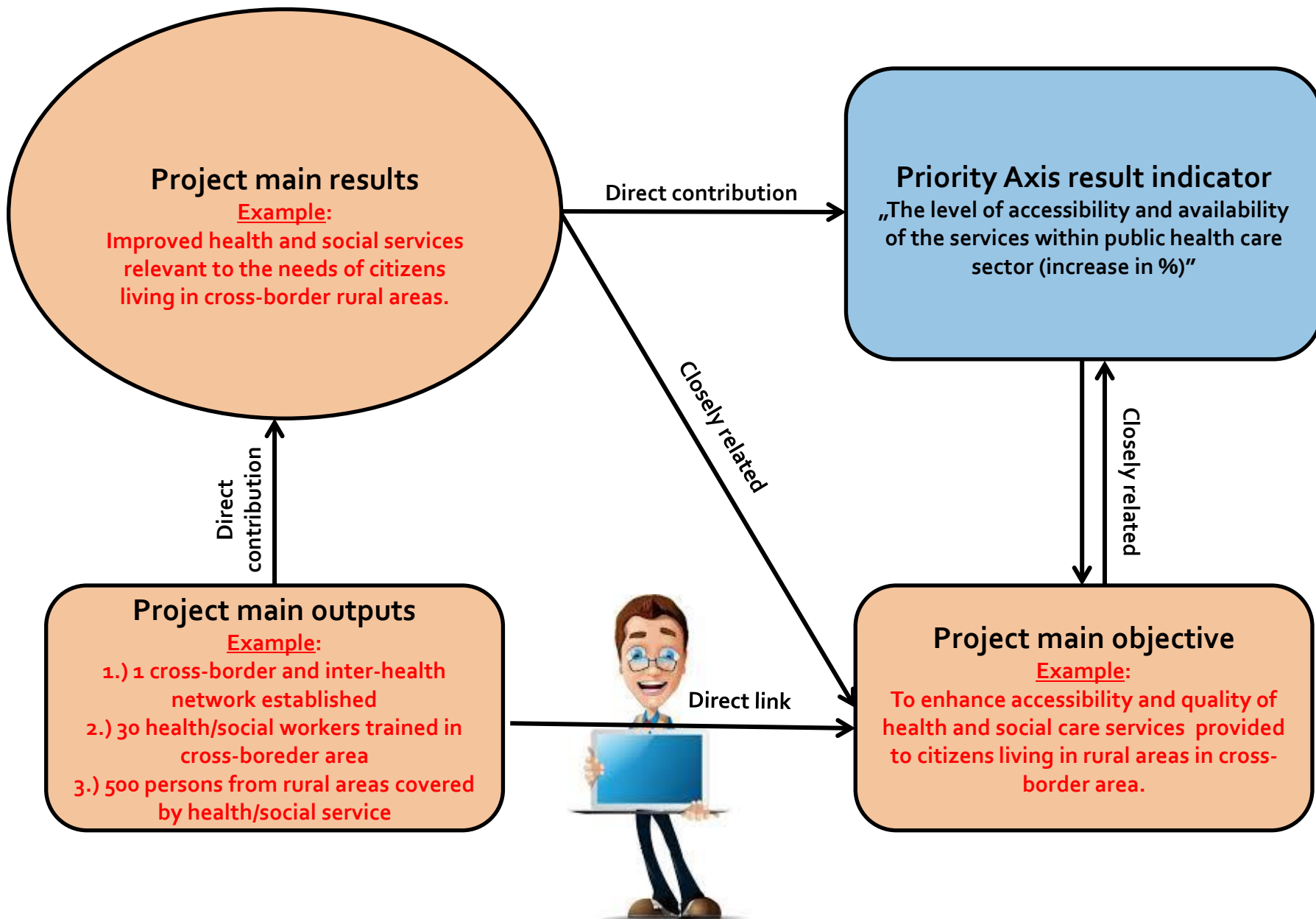
On the next couple of slides, we are going to present how the PROGRAMME and PROJECT intervention logic are interrelated. An example of a project which may be applied to the Priority Axis 1 will be presented.



We are going to present 1.) how the main elements of the PROJECT intervention logic (activities, deliverables, outputs, specific objective(s), results, main objective) are related to the main elements of the PROGRAMME intervention logic, and 2.) how they are related among themselves.







Project main objective

Example:

To enhance accessibility and quality of health and social care services provided to citizens living in rural areas in cross-border area.

Direct link – long term

Priority Axis specific objective

„To improve the quality of the services in public health and social care sectors across the borders.“



For more information contact the **Joint Secretariat** of the Interreg IPA CBC Croatia - Bosnia and Herzegovina - Montenegro 2014-2020 Programme.



The Programme website :
www.interreg-hr-ba-me2014-2020.eu
You can also write us an e-mail to:
js@interreg-hr-ba-me2014-2020.eu.

